

Цифровой настенный хроно-термостат 7946

Технические характеристики

По вопросам продаж и поддержки обращайтесь:

Алматы (7273)495-231
Ангарск (3955)60-70-56
Архангельск (8182)63-90-72
Астрахань (8512)99-46-04
Барнаул (3852)73-04-60
Белгород (4722)40-23-64
Благовещенск (4162)22-76-07
Брянск (4832)59-03-52
Владивосток (423)249-28-31
Владикавказ (8672)28-90-48
Владимир (4922)49-43-18
Волгоград (844)278-03-48
Вологда (8172)26-41-59
Воронеж (473)204-51-73
Екатеринбург (343)384-55-89

Иваново (4932)77-34-06
Ижевск (3412)26-03-58
Иркутск (395)279-98-46
Казань (843)206-01-48
Калининград (4012)72-03-81
Калуга (4842)92-23-67
Кемерово (3842)65-04-62
Киров (8332)68-02-04
Коломна (4966)23-41-49
Кострома (4942)77-07-48
Краснодар (861)203-40-90
Красноярск (391)204-63-61
Курск (4712)77-13-04
Курган (3522)50-90-47
Липецк (4742)52-20-81

Магнитогорск (3519)55-03-13
Москва (495)268-04-70
Мурманск (8152)59-64-93
Набережные Челны (8552)20-53-41
Нижний Новгород (831)429-08-12
Новокузнецк (3843)20-46-81
Ноябрьск (3496)41-32-12
Новосибирск (383)227-86-73
Омск (3812)21-46-40
Орел (4862)44-53-42
Оренбург (3532)37-68-04
Пенза (8412)22-31-16
Петрозаводск (8142)55-98-37
Псков (8112)59-10-37
Пермь (342)205-81-47

Ростов-на-Дону (863)308-18-15
Рязань (4912)46-61-64
Самара (846)206-03-16
Санкт-Петербург (812)309-46-40
Саратов (845)249-38-78
Севастополь (8692)22-31-93
Саранск (8342)22-96-24
Симферополь (3652)67-13-56
Смоленск (4812)29-41-54
Сочи (862)225-72-31
Ставрополь (8652)20-65-13
Сургут (3462)77-98-35
Сыктывкар (8212)25-95-17
Тамбов (4752)50-40-97
Тверь (4822)63-31-35

Тольятти (8482)63-91-07
Томск (3822)98-41-53
Тула (4872)33-79-87
Тюмень (3452)66-21-18
Ульяновск (8422)24-23-59
Улан-Удэ (3012)59-97-51
Уфа (347)229-48-12
Хабаровск (4212)92-98-04
Чебоксары (8352)28-53-07
Челябинск (351)202-03-61
Череповец (8202)49-02-64
Чита (3022)38-34-83
Якутск (4112)23-90-97
Ярославль (4852)69-52-93

Россия +7(495)268-04-70

Казахстан +7(7172)727-132

Киргизия +996(312)96-26-47

эл.почта: fro@nt-rt.ru || сайт: <https://far.nt-rt.ru/>

1 WALL MOUNTING

Install the programmable thermostat at 1,5 meters above the floor level, far from kitchens, heat sources, windows and doors. Make sure the base is fixed to a level surface, without strains.

2 ELECTRIC CONNECTIONS

Connect terminals 1 - 2 to the heating system with two wires thus replacing the traditional thermostat at any time and without adding further connections. When the ambient temperature increases, the relay will open terminals 1 - 2 and will close terminals 1-4. Terminal 4 is free and it may be used for signalling or other purposes, as required.

3 OFF MODE SELECTION

When in OFF mode, FAR chrono-thermostat may be set to keep a fixed temperature of 5°C to protect the system from the risk of freezing.

This selection must be carried out during the installation and before inserting the batteries.

Note: if this selection is needed to be changed after the installation, FAR chrono-thermostat has to be reset and reprogrammed.

4 MOUNTING THE THERMOSTAT BODY ON THE BASE

5 INSERTING AND REPLACING THE BATTERIES

Insert two long life AA 1,5V alkaline batteries, paying attention to the indicated polarity. Batteries last approximately 2 years: when they begin to run down, the battery symbol starts to flash on the display.

If the batteries are not replaced within 15 days, chrono-thermostat FAR will switch-off automatically and the display will indicate OFF.

6 TIME SETTING

(see the picture on the right)

B 60 mm

INSTALLATION

loosen this screw and turn the body of the controller upwards to detach the base for fixing to the wall.

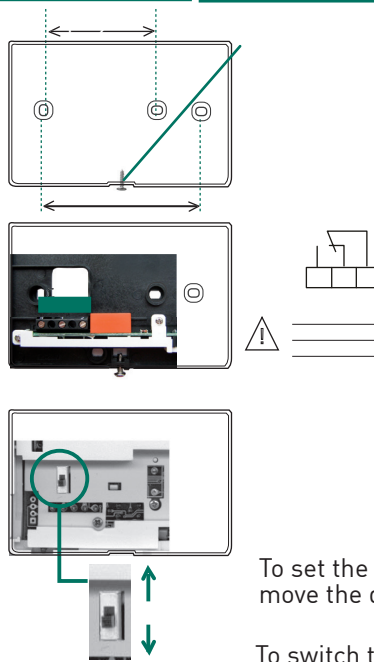
A for flush-mounting boxes (3 modules, 503)

B for round flush-mounting boxes

A 83,5 mm

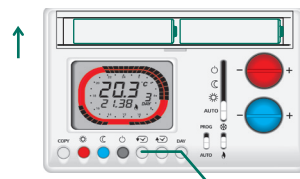
4 1 2

! To be installed by qualified personnel only!



To set the ANTIFREEZE 5°C protection move the dip switch HIGH.

To switch the system completely OFF, move the dip switch DOWN.



Insert the batteries

- 'AA' 1.5V + - 'AA' 1.5V +

time and day setting keys

english

WEEKLY

PROGRAMMABLE THERMOSTAT

temperature in °C

program setting ring

ECONOMY / TMIN

COMFORT / TMAX

OFF

DAY

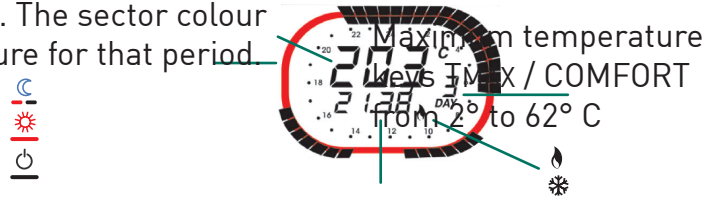
day of the week

heating system ON

air conditioning system ON

TIME

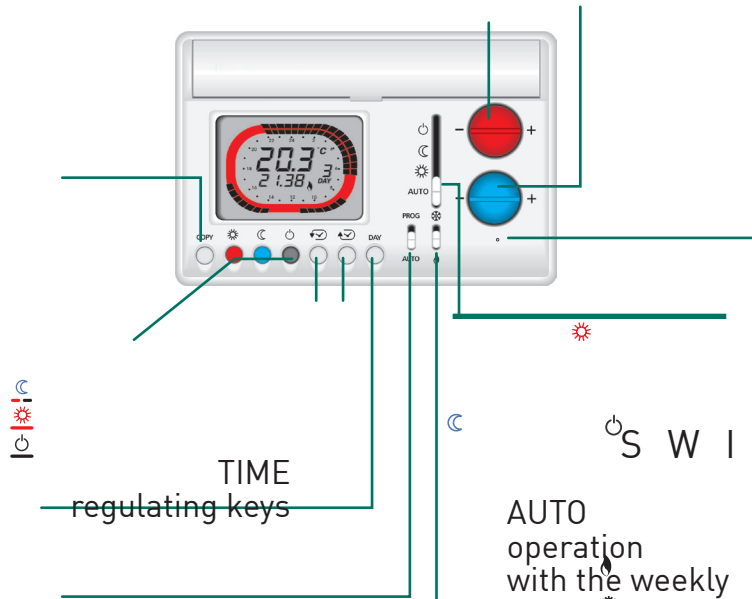
The program setting ring shows a 24-hours clock, divided into 30 min sectors. The sector colour indicates the set temperature for that period.



Minimum temperature keys.
TMIN / ECONOMY
from 2° to 62° C

COPY

Allows to copy the previous day program to the following days.
1 = 2 = 3 = 4 = 5 = 6 = 7



RESET
Keep it pressed for a few seconds to reset any customization and restore the pre-set standard program

Temperature setting keys

ECONOMY / TMIN In pushing one of the three keys, the flashing sector will turn into the colour of the desired set temperature
COMFORT / TMAX
OFF

AUTO operation with the weekly automatic program

COMFORT / TMAX keeps constantly the COMFORT temperature set with the TMAX keys

ECONOMY / TMIN keeps constantly the ECONOMY temperature set with the TMIN keys.

OFF keeps the system constantly OFF or with antifreeze protection 5°C

DAY

Day setting key

1 = monday / 2 = tuesday / 3 = wednesday
4 = thursday / 5 = friday / 6 = saturday / 7 = sunday

PROG

programming

AUTO

operation with the weekly automatic program

With the switch set on

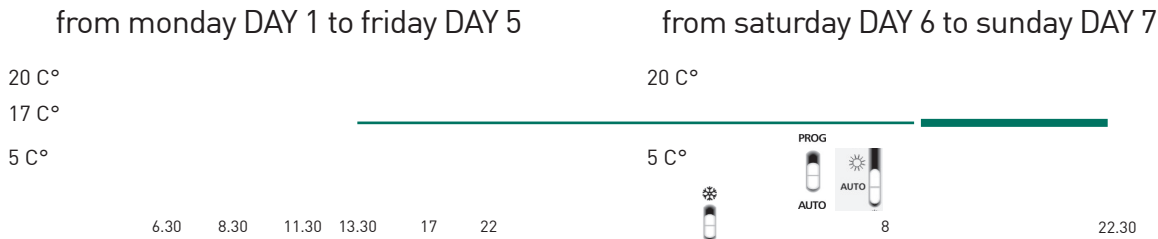
7946 is set to regulate the heating system
With the switch set on 7946 is set to regulate the air conditioning system.

S T A N D A R D

Once the 7946 is installed and connected, it is possible to use the weekly program with the pre-set operating time and temperatures, just positioning the switches on the AUTO position.

P R O G R A M S

Verify that the switch is in the HEATING position.



C U S T O M I Z A T I O N

It is possible to set the desired temperature for every 30 minutes.

1

Set the temperature
T MIN T MAX

3

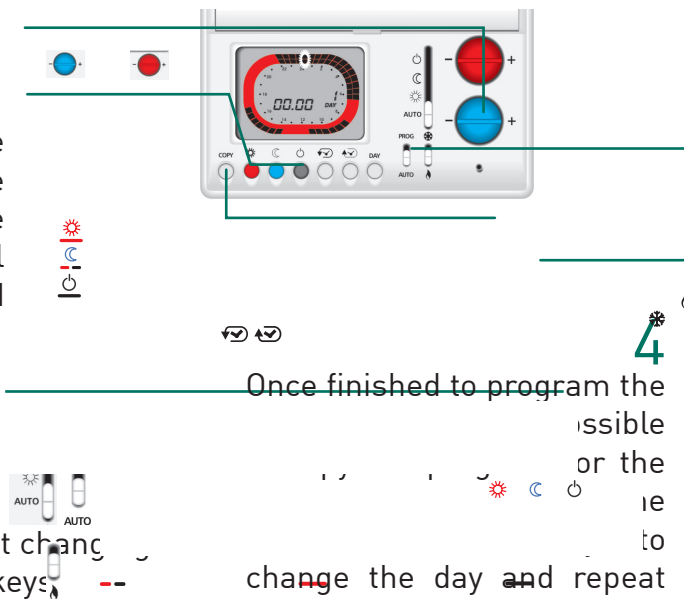
It is possible to set the desired temperature pressing one of the three keys. The sector will change the colour and advance 30 minutes.

COMFORT / TMAX

ECONOMY / TMIN

OFF

To move the switch without changing the temperature, use the keys



Once finished to program the

possible

or the

ie

to

change the day and repeat

Move the switches to the AUTO and PROG positions to start the program setting. The display will show time 00.00 and DAY1.

2

On the programming ring the sector which the temperature has to be changed flashes and corresponding time appears.

5

Once the changes are finished, position the switch to start the heating or to start the air-conditioning.

F U N Z I O N E J O L L Y

With this function the FAR chrono-thermostat enables you to cut out temporarily the automatic program at any time, without changing its settings, in order to have constantly the required temperature COMFORT - ECONOMY - OFF for a period from 1 to 240 hours.

With the switch in the AUTO position, press the keys or or to set for how many hours the 7946 has to cut the automatic program out, in order to force temporarily the temperature. The ring on the display will change the colour according to the selected temperature.

ECONOMY / TMIN

COMFORT / TMAX

OFF

Once the set time is passed, the FAR chrono-thermostat will resume the automatic program. To reduce or cut out the JOLLY period before the set time, press a different colour key than the one shown on the ring.

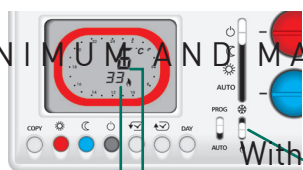
working HOURS
since last
initialisation

working HOURS
on the day before

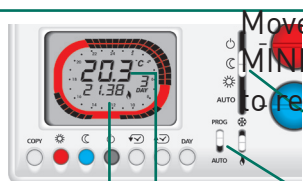
With 7946 it is possible to know for how many hours the heating system worked the day before (closed relay – ON) and from the last FAR chrono-thermostat initialization (last reset or battery insertion).

The display will show the heating working hours, positioning the switches as indicated in the picture.

PREVIOUS DAY MINIMUM AND MAXIMUM
TEMPERATURES



With FAR chrono-thermostat it is possible to verify the MINIMUM and MAXIMUM temperatures reached the day before and what time they were measured.



Move the switch to the ECONOMY position to read the MINIMUM temperature or move to the COMFORT position to read the MAXIMUM temperature.

TIME when the
temperature was
recorded

MAXIMUM or MINIMUM
room temperatures

Move the switch to PROG

SUMMER / AIR-CONDITIONING MODE

FAR chrono-thermostat starts the AIR-CONDITIONING mode moving the switch to the SUMMER position. The COMFORT/TMAX temperature can be regulated pressing the red keys. The red sectors on the ring indicate what time the air-conditioning is ON; the other colours indicate when the system is OFF.



TECHNICAL DATA

In compliance with EN 60730-1 and parts two
Contact rating 5 (3)A 250V c.a.
Micro-disconnection (1BU)
Software classe A
Voltage free switching contact
Temperature regulation: COMFORT from 2° to 62°C;
ECONOMY from 2° to 62°C
Differential: +/- 0,25°C
Thermal gradient: 4°K/h
OFF mode with optional antifreeze protection (5°C) by a dip switch.
Maximum room temperature: T45.
double insulation

Protection degree IP20
Pollution degree 2
Impulse voltage 4000V
Power supply without connection to the electrical line with 2 AA 1,5V alkaline batteries (1 year battery life).
Automatic control of the battery charge; the display will indicate if the charge is inadequate.
Battery replacement without data dropout.
Switch for the winter or summer operating modes.
Reset key to restore the set program.
Dimensions 120 x 80 x 27 mm

По вопросам продаж и поддержки обращайтесь:

Алматы (7273)495-231
Ангарск (3955)60-70-56
Архангельск (8182)63-90-72
Астрахань (8512)99-46-04
Барнаул (3852)73-04-60
Белгород (4722)40-23-64
Благовещенск (4162)22-76-07
Брянск (4832)59-03-52
Владивосток (423)249-28-31
Владикавказ (8672)28-90-48
Владимир (4922)49-43-18
Волгоград (844)278-03-48
Вологда (8172)26-41-59
Воронеж (473)204-51-73
Екатеринбург (343)384-55-89

Иваново (4932)77-34-06
Ижевск (3412)26-03-58
Иркутск (395)279-98-46
Казань (843)206-01-48
Калининград (4012)72-03-81
Калуга (4842)92-23-67
Кемерово (3842)65-04-62
Киров (8332)68-02-04
Коломна (4966)23-41-49
Кострома (4942)77-07-48
Краснодар (861)203-40-90
Красноярск (391)204-63-61
Курск (4712)77-13-04
Курган (3522)50-90-47
Липецк (4742)52-20-81

Магнитогорск (3519)55-03-13
Москва (495)268-04-70
Мурманск (8152)59-64-93
Набережные Челны (8552)20-53-41
Нижний Новгород (831)429-08-12
Новокузнецк (3843)20-46-81
Ноябрьск (3496)41-32-12
Новосибирск (383)227-86-73
Омск (3812)21-46-40
Орел (4862)44-53-42
Оренбург (3532)37-68-04
Пенза (8412)22-31-16
Петрозаводск (8142)55-98-37
Псков (8112)59-10-37
Пермь (342)205-81-47

Ростов-на-Дону (863)308-18-15
Рязань (4912)46-61-64
Самара (846)206-03-16
Санкт-Петербург (812)309-46-40
Саратов (845)249-38-78
Севастополь (8692)22-31-93
Саранск (8342)22-96-24
Симферополь (3652)67-13-56
Смоленск (4812)29-41-54
Сочи (862)225-72-31
Ставрополь (8652)20-65-13
Сургут (3462)77-98-35
Сыктывкар (8212)25-95-17
Тамбов (4752)50-40-97
Тверь (4822)63-31-35

Тольятти (8482)63-91-07
Томск (3822)98-41-53
Тула (4872)33-79-87
Тюмень (3452)66-21-18
Ульяновск (8422)24-23-59
Улан-Уда (3012)59-97-51
Уфа (347)229-48-12
Хабаровск (4212)92-98-04
Чебоксары (8352)28-53-07
Челябинск (351)202-03-61
Череповец (8202)49-02-64
Чита (3022)38-34-83
Якутск (4112)23-90-97
Ярославль (4852)69-52-93

Россия +7(495)268-04-70

Казахстан +7(7172)727-132

Киргизия +996(312)96-26-47

эл.почта: fro@nt-rt.ru || сайт: <https://far.nt-rt.ru/>